

SOLID SERIES

STANDARD COLORS

70% PVDF resin based coatings provide high-performance durability for exterior and interior applications. These coatings are designed to resist fading, chalking, and abrasion. Meets the requirement of AAMA 2605-13 and AAMA 620-02.



Midnight (02)
.063" (S)



Sherwood Green (11)
.063"



Mocha Brown (04)
.063"



Desert Dust (09)
.063"



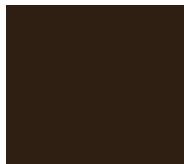
Sand Dollar (06)
.063" (S)



Harbor Grey (16)
.063"



Stone White (10)
.063" (S)



Deep Bronze (01)
.063" (S)



Marine (19)
.063"



Merlot (25)
.063"



Buckskin Tan (15)
.063"



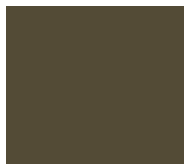
Glacier Blue (18)
.063"



Charcoal Grey (62)
.063" (S)



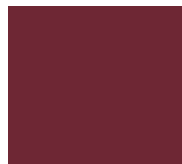
Arctic White (26)
.063" (S)



Chestnut Bronze (03)
.063" (S)



Arbor Green (30)
.063"



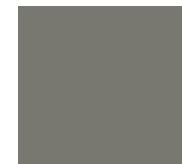
Tuscan Red (07)
.063"



Cashmere Cream (05)
.063"



Steel Blue (21)
.063"



Abyss Grey (20)
.063" (S)



Holly (27)
.063"



Olive Green (12)
.063"



Clay Red (08)
.063"



Oasis Blue (14)
.063"



Gravity Grey (13)
.063" (S)

(S) - Stock Inventory

- All finishes are available in two aluminum thicknesses - refer to product data for more information.
- Finishes shown are representations of actual colors. Please call or write for physical metal sample(s).
- All finishes are subject to minimum quantities.
- Custom color matching available.

MATTE FINISHES

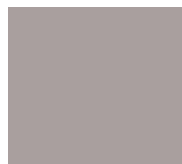
70% PVDF resin based coatings, as noted above, designed to simulate natural metal hues in a high performance paint system.



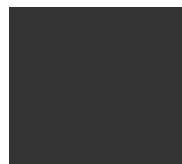
Rhino Grey (37)
.063"



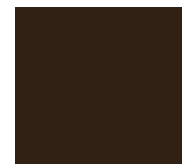
Battleship Grey (34)
.063"



Sky Grey (33)
.063"



Matte Black (32)
.063" (S)



Espresso (29)
.063"



Almond (36)
.063"

- Standard mill thickness tolerances apply for aluminum sheet.
- Immediately after installation, protective film must be removed.
- Oil canning is not a cause for rejection.

PREMIUM FINISHES

PVDF resin based coatings, as noted above, with premium pigmentation to obtain metallic or deep color for desired aesthetics. These colors (excluding Crimson (17)) are directional metallic that may have slight lot-to-lot variations.



Green Tea (24) ★
.063"



Golden Ray (31) ★
.063"



Harvest Gold (23) ★
.063"



Titanium (35) ★
.063" (S)



Cosmic Silver (28) ★
.063" (S)



Crimson (17)
.063"

★ - Metallic / Mica

- (S) - Stock Inventory (S)
- (S) - Standard Finishes
- (S) - Matte Finishes
- (\$\$) - Premium Finishes
- (\$\$\$) - Custom Color
- (\$\$\$\$) - Faux or Anodized

See reverse side for FAUX SURFACES and ANODIZED SURFACES options

FAUX SURFACES

FAUX SURFACES

- Premium multi-coat protective 70% PVDF coating system designed to simulate the looks of natural elements, including wood and specialty metals.
- 20-year finish warranty is available.
 - Colors can be altered for a custom scheme.
 - Only available on .063" x 36" wide aluminum substrate.
 - Minimum requirements do apply.

FAUX ZINC



Natural Zinc (Z1)
.063"



Grey Zinc (Z2)
.063"



Black Zinc (Z3)
.063"



Red Zinc (Z4)
.063"



Blue Zinc (Z5)
.063"

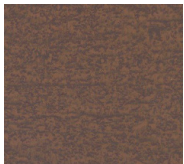


Brown Zinc (Z6)
.063"

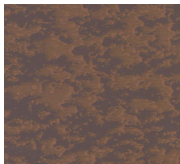


Green Zinc (Z7)
.063"

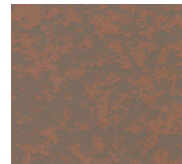
FAUX RUST



Korten Rust (R1)
.063"

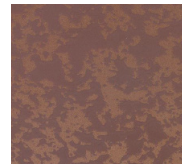


Cimarron Rust (R2)
.063"



Mesa Rust (R3)
.063"

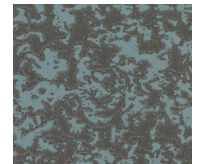
FAUX PATINA COPPER



Canyon Copper (C1)
.063"

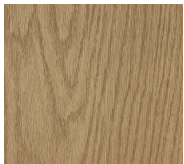


Antique Copper (C2)
.063"

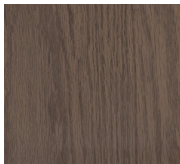


Nordic Copper (C3)
.063"

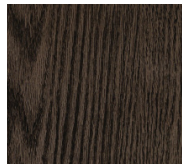
FAUX WOODGRAIN



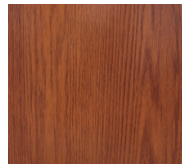
Light Oak (W1)
.063"



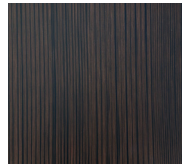
Medium Oak (W2)
.063"



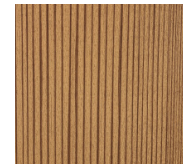
Dark Oak (W3)
.063"



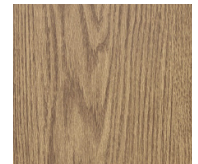
Cherry Oak (W4)
.063"



Aged Grey (W5)
.063"



Light Cherry (W6)
.063"

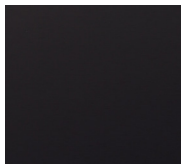


Southern Pecan (W7)
.063"

ANODIZED SURFACES

ANODIZED SURFACES

Durable and Beautiful; this series of Anodized Surface Finishes is developed through an electrochemical process that creates an anodic film molecularly bonded to the aluminum substrate. This process protects the aluminum and develops an exceptionally hard and durable finish while simultaneously offering a wide array of colors to complement your project.



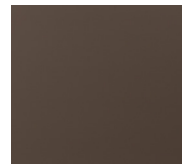
Black (A1)
.063" (S)
Class II



Clear (A2)
.063" (S)
Class I or II



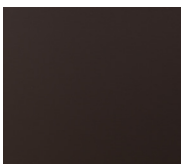
Dark Bronze (A3)
.063"
Class II



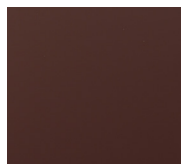
Light Bronze (A4)
.063"
Class II

(S) - Stock Inventory

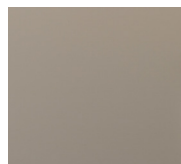
- Designed for exterior applications.
- AQ 5005 x .063" Anodized Aluminum substrate
- 20 Year - surface warranty
- Designed for exterior applications.
- Class I Architectural film 0.7 (18 microns)
- Class II Architectural film 0.5 (10 microns)
- Minimum requirements do apply.



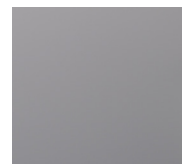
Medium Bronze (A5)
.063"
Class II



Copper Penny (A6)
.063"
Class II



Champagne Gold (A7)
.063"
Class II



Silver White (A8)
.063"
Class I or II